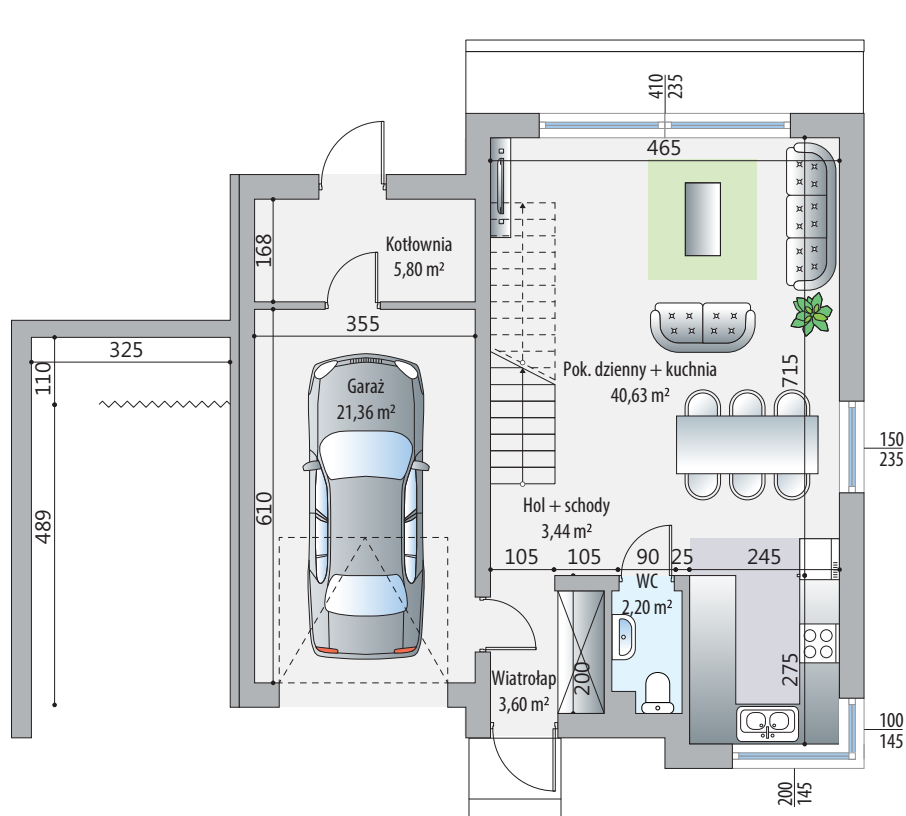
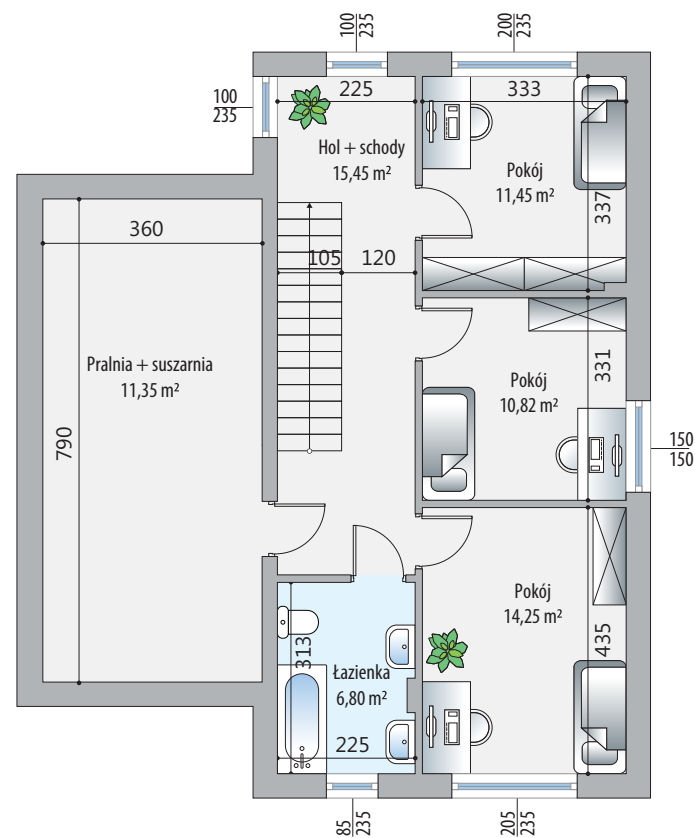


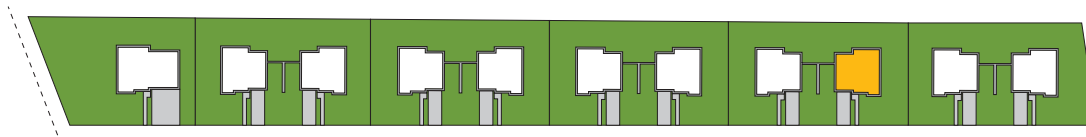
# Budynek 3 lokal 1



Parter -70.04 m<sup>2</sup>



Piętro -70.12 m<sup>2</sup>



PARTER		70.04 m <sup>2</sup>
1	Salon + kuchnia	40.63 m <sup>2</sup>
2	Hol + schody	3.44 m <sup>2</sup>
3	WC	2.20 m <sup>2</sup>
4	Wiatrołap	3.60 m <sup>2</sup>
5	Kotłownia	5.80 m <sup>2</sup>
6	Garaż	21.36 m <sup>2</sup>

PIĘTRO		70.12 m <sup>2</sup>
7	Pokój	11.45 m <sup>2</sup>
8	Pokój	10.82 m <sup>2</sup>
9	Pokój	14.25 m <sup>2</sup>
10	Łazienka	6.80 m <sup>2</sup>
11	Hol + schody	15.45 m <sup>2</sup>
12	Pralnia	11.35 m <sup>2</sup>

